



BRIDGE OF DON ACADEMY

Be Caring Be Honest Be Respectful Be Your Best

Braehead Way • Bridge of Don • Aberdeen • AB22 8RR

Tel 01224 707583

Web: www.bridgeofdon.aberdeen.sch.uk

E-mail: bridgeofdon@aberdeencity.gov.uk

Head Teacher: Daphne McWilliam



28 January 2022

Dear Parent/Carer

Head Teacher's Update – 28 January 2022

I write to update you on the following:

- Calendar Dates
- S4 – S6 Next Steps
- Course Choice Procedures
- Supporting Parents/Carers with Course Choice Procedures
- School Reports
- Learner Booklets
- CFINE Food Bank Collection
- Pathway Planning – Developing the Young Workforce (DYW) Opportunities
- Severe Weather
- Contact with School

Calendar Dates

Monday 14 February: Half Term Holiday

Tuesday 15 February: In-Service Day

Wednesday 16 February: In-Service Day

S4 – S6 Next Steps

We look forward to welcoming all our S4 – S6 pupils back to school full time on Monday 31 January. I have had positive reports from Mr Jamieson who has been organising the exam diet about the conduct of young people throughout and I have seen this myself. Almost all young people have turned up on time and prepared in line with instructions given in assemblies and conducted themselves well during the exams. It was important that we put this diet of exams in place as practice for the young people. They needed the experience of study leave, revision, organising their time as well as completing assessments under exam conditions to help them prepare for the final diet in the summer term and I am proud of how they have approached and risen to this challenge.

Teachers have begun marking exam scripts and will be feeding the results back to young people over the course of the next three weeks.

To ensure that judgements are accurate there are two parts to the quality assurance process. The first part depends on the subject and the number of staff in the department and is our **internal moderation** process.

- All teachers complete the SQA Understanding Standards online training to ensure they understand the national standards for each of the courses they are teaching.
- Teachers may share marking where possible. For example, each teacher in the department taking responsibility for marking a section of a paper. They will then organise meetings to discuss.
- In smaller departments teachers may mark papers together discussing pupils' responses or performance as they do so.
- In some cases, teachers may also sample each other's marking to ensure consistent standards are applied.
- When marking is complete meetings are also held to discuss young people's scripts and deal with unexpected results or anomalies.

The next stage is called **external moderation** and involves teachers meeting with teachers in other schools to share and discuss pupil responses to ensure that the national standard is met. In Aberdeen schools this year that process will be undertaken on the first of the February in-Service days.

For young people their next steps will be to use the experience of the exams as well as the feedback they get from teachers to plan what they need to do next in terms of planning and organising their revision, prioritising their studies, or focussing on areas for further work. This applies when they have done well and when they have done less well than expected.

An important source of feedback for you and for young people will be their report. The following is an extract from our reporting document available on the school website [here](#).

There will be a full report for each National Course (following assessment period which may include prelim exams):

- *Results of assessments*
- *Next steps to meet target grade*
- *Effort, Behaviour and Homework.*
- *Recommendation – although this is part of the separate course choice procedures.*

Issue date 22 February 2022

As always young people will be supported to plan and complete their next steps by their class teachers and their Head of House over the next few weeks and months.

Course Choice Procedures

The course choice procedures are well under way for the current S2 and S3 pupils. All pupils are being supported during PSE and being offered time with their Guidance

teacher to discuss their pathway planning and course choices. All senior pupils will be returning following two weeks of estimate exams and will be going through course choices in week beginning 31 January. They will be issued with their course choice sheets in PSE and all the resources that will support young people in making the appropriate choices are available on Google Classroom and also by using the following links below.

[S2 into S3 Course Choice](#)

[S3 into S4 Course Choice](#)

[S4/5 into S5/6 Course Choice](#)

Deadlines for returning course choice forms:

S2 into S3: Thursday 10 February

S3 into S4: Friday 25 February

S4/5 into S5/6: Friday 25 February

Supporting Parents/Carers with Course Choice Procedures

The course choice booklet and the presentations which were made to all young people in Personal and Social Education (PSE) lessons are available on the school website using this [link](#). The booklet has a detailed introduction and then course descriptors for each course on offer to your child(ren). Heads of House will also be having one-to-one conversations with pupils to support them through this process.

All this information is also in Google Classroom for young people to access but if they feel they need more information about the different subjects, they can ask their teachers in their next lesson.

You will also find it useful to speak to your child(ren) about *My World of Work* which is the online resource they have been using in PSE. This has a range of tools which help young people make decisions about subjects by exploring potential careers and pathways. You will find the Option Choice, Skills and Strength Tool useful: it can be used to link subjects to job profiles and industries. It is a useful starting point for conversations about choosing subjects. Young people enter different subject combinations, and they will then be given information on the different future career options. You can use this [link](#) which will take you straight to *My World of Work* with no need to log in.

The dates for school reports and parents' evenings are detailed below: these will be a further source of information to support you to support your child(ren).

Hopefully this information from school will support discussions at home with your child(ren) as they make their choices. In addition, we would advise you to encourage young people to take all the time available to them to research and make decisions: up to the deadline for handing in their choice form.

If having been through the steps above, you still have questions or queries please contact your child(ren)'s Head of House by telephone or email prior to the deadline.

School Reports



The school's calendar for reporting and parents' evenings can be downloaded from the school website [here](#).

CFINE Food Bank Collection

The next collection will be on **Friday 11 February**. We will be collecting non-perishable food and essential items for CFINE. To find out more use this [link](#).

In addition, Miss Strachan has a collection tin in her room (G17) for small change that young people may wish to donate which we will then use to purchase items for the foodbank.

<i>Yes please</i>	<i>No thank you</i>
Tinned Food Cereals Pasta Condiments and spices Juices Toiletries Nappies	Fresh Food Frozen Items Refrigerated Items



Collection points are located throughout the school as follows:

- Admin block - Assembly Room
- Ground Floor - Home Economics classroom
- Ground Floor - G17 (Miss Strachan's room)
- First Floor - F12 (Miss Devlin's room)
- Top Floor - T3 (Mrs Lees' room)
- Staffroom

Pathway Planning – Developing the Young Workforce (DYW) Opportunities

DYW opportunities are regularly available on Google Classroom and the school website for young people to see. This week the following have been posted:

- The North of Scotland Universities Collaborative
- Goals Aberdeen
- National Apprenticeship Week
- SHMU Employability Course
- Woman in Rail Event
- Scottish Apprenticeship Week – Early Education and Childcare

Lots more DYW opportunities can be found [here](#).

Severe Weather

We have in place policies to ensure learning can continue when we have periods of bad weather.

All classwork and homework are posted on Google Classroom as assignments so parents/carers can see this using Google Guardian. If you need more help with the Google suite of resources, you will find the Google Support site under the *Parents* menu on the front page of the school website. You can also access it using this [link](#).

In severe weather conditions, emergency closure or other emergency circumstances, parents and pupils can receive up-to-date information via:

- The School Information Line
Tel: 0870 054 1999
PIN code 011020
- Aberdeen City Council's School Closures website
<https://www.aberdeencity.gov.uk/school-closures>

If we have an emergency during the school day and must send young people home early, we will contact parents/carers using Groupcall. Before we send young people home, we ask teachers to check that they have been able to contact home and will be able to get into the house. If any young person has not been able to do this, we ask them to wait in school until we or they have made contact.

We have separate arrangements for our more vulnerable learners who travel to school by taxi whereby one of our support team will telephone parent/carer directly.

Contact with School

When e-mailing please provide your child's name and registration class and a note of the nature of the concern so it can be forwarded appropriately.

Pastoral Care

Braemar House: Miss Howard
Crathes House: Mrs Napier
Drum House: Miss Smith
Fyvie House: Mrs Marshall

Year Heads

S1 and S2: Mr Haggarty
S3 and S4: Mrs Cruickshank
S5 and S6: Mr Jamieson

I know that times continue to be challenging for many of you and would encourage you to contact us here at school if you think we can help. I wish you all well in 2022.

Yours sincerely

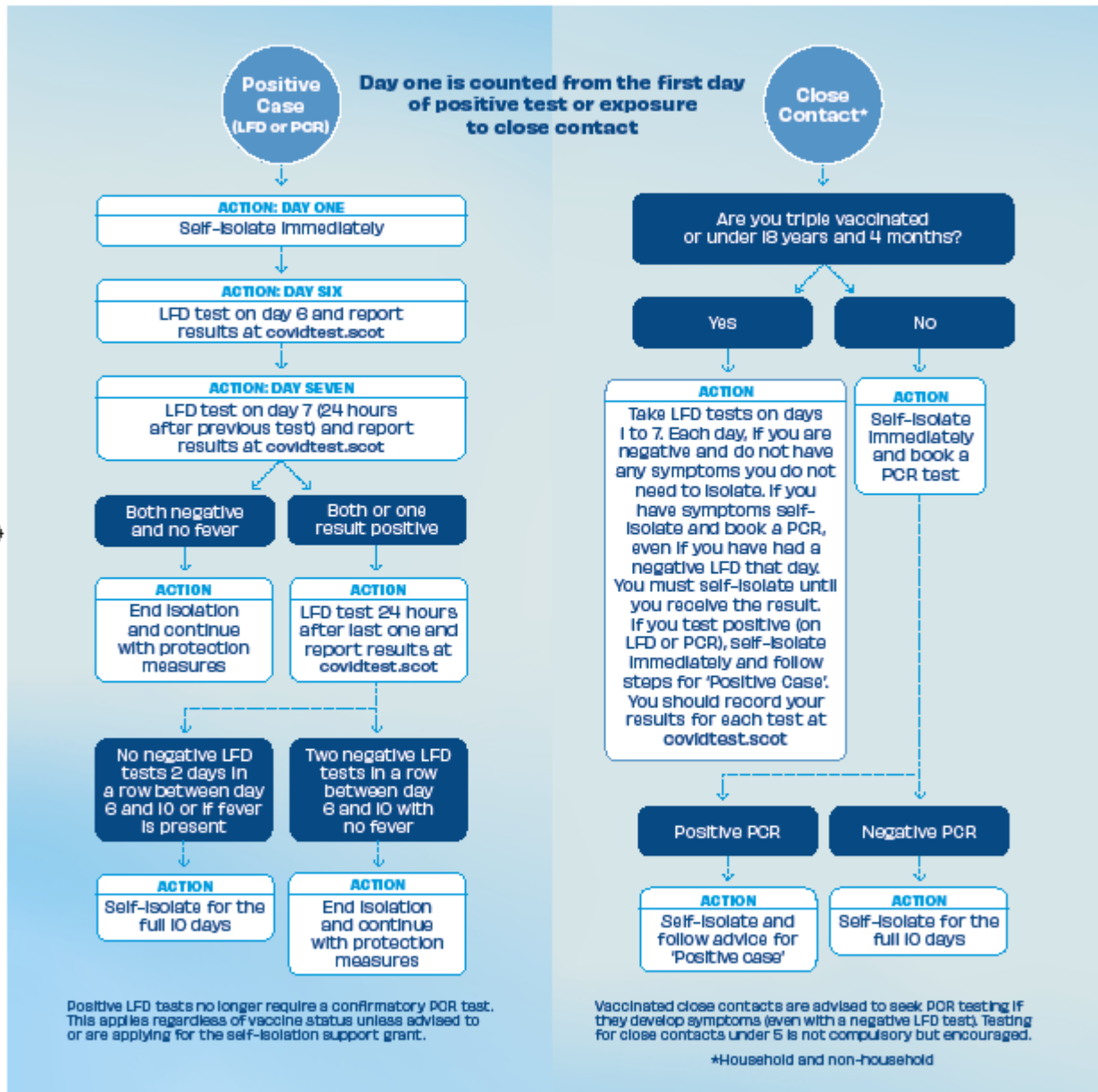
Daphne V. Munn

Mrs D McWilliam
Head Teacher



**Living safely
this winter**

Changes to Self-Isolation and Testing



For more details visit NHSinform.scot/isolation

Being fully vaccinated reduces your risk of serious ill-health or hospitalisation from COVID-19 and time in self-isolation if you are a close contact. If you are not fully vaccinated visit NHSinform.scot or call 0800 030 8013 for details on how to get your first or next dose.

