



# BRIDGE OF DON ACADEMY

*Be Caring Be Honest Be Respectful Be Your Best*

Braehead Way • Bridge of Don • Aberdeen • AB22 8RR

Tel 01224 707583

Web: [www.bridgeofdon.aberdeen.sch.uk](http://www.bridgeofdon.aberdeen.sch.uk)

E-mail: [bridgeofdon@aberdeencity.gov.uk](mailto:bridgeofdon@aberdeencity.gov.uk)

**Head Teacher: Daphne McWilliam**



21 January 2022

Dear Parent/Carer

## Head Teacher's Update – 21 January 2022

I write to update you on the following:

- Calendar Dates
- Changes to Self-Isolation and Testing
- Course Choice Procedures
- Supporting Parents/Carers with Course Choice Procedures
- School Reports
- Prelim Examinations
- Learner Booklets
- Pathway Planning – Developing the Young Workforce (DYW) Opportunities
- Severe Weather
- Contact with School

### Calendar Dates

Monday 14 February: Half Term Holiday

Tuesday 15 February: In-Service Day

Wednesday 16 February: In-Service Day

### Changes to Self-Isolation and Testing

I have added the latest flow chart explaining the new procedures at the end of this letter.

### Course Choice Procedures

The course choice procedures for pupils moving into S3, S4, S5 and S6 were detailed in last week's HT update letter dated 14 January 2022. You can access this [here](#).

Further information for the following year groups is available by using the links:

[S2 into S3 Course Choice](#)

## [S3 into S4 Course Choice](#)

All S4 and S5 pupil are undertaking estimate exams and therefore will start the course choice procedures on their return to school – Monday 31 January. Further information to follow.

### **Deadlines for returning course choice forms:**

S2 into S3: Thursday 10 February  
S3 into S4: Friday 25 February  
S4/5 into S5/6: Friday 25 February

## **Supporting Parents/Carers with Course Choice Procedures**

The course choice booklet and the presentations which were made to all young people in Personal and Social Education (PSE) lessons are available on the school website using this link. The booklet has a detailed introduction and then course descriptors for each course on offer to your child(ren). Heads of House will also be having one to one conversations with pupils to support them through this process.

All this information is also in Google classroom for young people to access but if they feel they need more information about the different subjects, they can ask their teachers in their next lesson.

You will also find it useful to speak to your child(ren) about *My World of Work* which is the online resource they have been using in PSE. This has a range of tools which help young people make decisions about subjects by exploring potential careers and pathways. You will find the Option Choice, Skills and Strength Tool useful: it can be used to link subjects to job profiles and industries. It is a useful starting point for conversations about choosing subjects. Young people enter different subject combinations, and they will then be given information on the different future career options. You can use this [link](#) which will take you straight to *My World of World* with no need to log in.

The dates for school reports and parents' evenings are detailed below: these will be a further source of information to support you to support your child(ren).

Hopefully this information from school will support discussions at home with your child(ren) as they make their choices. In addition, we would advise you to encourage young people to take all the time available to them to research and make decisions: up to the deadline for handing in their choice form.

If having been through the steps above, you still have questions or queries please contact your child(ren)'s Head of House by telephone or email prior to the deadline.

## **School Reports**

The school's calendar for reporting and parents' evenings can be downloaded from the school website [here](#).

## **Prelim Examinations**

The prelim diet for courses being delivered here at Bridge of Don Academy enters its second week on Monday 24 January 2022 and finishes on Friday 28 January 2022. The detailed information for parents/carers can be read in last week's HT Update, 14 January 2022, on the school website using this [link](#).

Study Leave is given for the two weeks that exams are taking place. This means young people study at home for their exams and only attend school for those exams, assessments or if requested to do so by their teacher to complete work. They can also come into school to study but should be prepared with work and materials and, with the agreement of teachers work in classrooms, the library will not be available. As always, school uniform must be worn. They must be aware that we do use many classrooms for the exams and so these are not always available.

## **Learner Booklets**

Please find below the link to the Learner Booklets for Nationals 4 and 5, Higher and Advanced Higher. These booklets contain useful information for each subject giving details of what learning young people should be revisiting as well as other useful information such as websites or resources they can access. This is a great resource provided by class teachers to enable you, parents/carers, to support your young person at home in preparation for their assessments and estimate exams.

If anyone requires a hard copy of this document pupils should speak to their Guidance teacher.

Click this link to access the [Learner Booklets](#) from the school website.

## **Pathway Planning – Developing the Young Workforce (DYW) Opportunities**

DYW opportunities are regularly available on Google Classroom and the school website for young people to see. This week the following have been posted:

- Siemens Female STEM
- Health and Social Care
- KPMG
- Paid Work Experience
- HSBC
- Early Education Childcare Apprenticeships
- National Apprenticeship Week

Lots more DYW opportunities can be found [here](#).

### **Skills Development Scotland Webinar For Parents/Carers**

Skills Development Scotland is hosting a webinar 'How to have meaningful career conversations with your young person' for parents and carers on 27<sup>th</sup> January at 6.30pm. Register [here](#).

### **AAB's 2022 Apprenticeship Programme**

AAB's 2022 Apprenticeship Programme is now open for applications, with opportunities across the organisation's Audit, Business Advisory and Payroll teams. Closing date is 1 March 2022, with training beginning in the summer. More info and applications [here](#).

## **Severe Weather**

We have in place policies to ensure learning can continue when we have periods of bad weather.

All classwork and homework are posted on Google Classroom as assignments so parents/carers can see this using Google Guardian. If you need more help with the Google suite of resources, you will find the Google Support site under the *Parents* menu on the front page of the school website. You can also access it using this [link](#).

In severe weather conditions, emergency closure or other emergency circumstances, parents and pupils can receive up-to-date information via:

- The School Information Line  
Tel: 0870 054 1999  
PIN code 011020
- Aberdeen City Council's School Closures website  
<https://www.aberdeencity.gov.uk/school-closures>

If we have an emergency during the school day and must send young people home early, we will contact parents/carers using Groupcall. Before we send young people home, we ask teachers to check that they have been able to contact home and will be able to get into the house. If any young person has not been able to do this, we ask them to wait in school until we or they have made contact.

We have separate arrangements for our more vulnerable learners who travel to school by taxi whereby one of our support team will telephone parent/carer directly.

## **Contact with School**

When e-mailing please provide your child's name and registration class and a note of the nature of the concern so it can be forwarded appropriately.

**Pastoral Care**

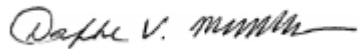
**Year Heads**

Braemar House: Miss Howard  
Crathes House: Mrs Napier  
Drum House: Miss Smith  
Fyvie House: Mrs Marshall

S1 and S2: Mr Haggarty  
S3 and S4: Mrs Cruickshank  
S5 and S6: Mr Jamieson

I know that times continue to be challenging for many of you and would encourage you to contact us here at school if you think we can help. I wish you all well in 2022.

Yours sincerely

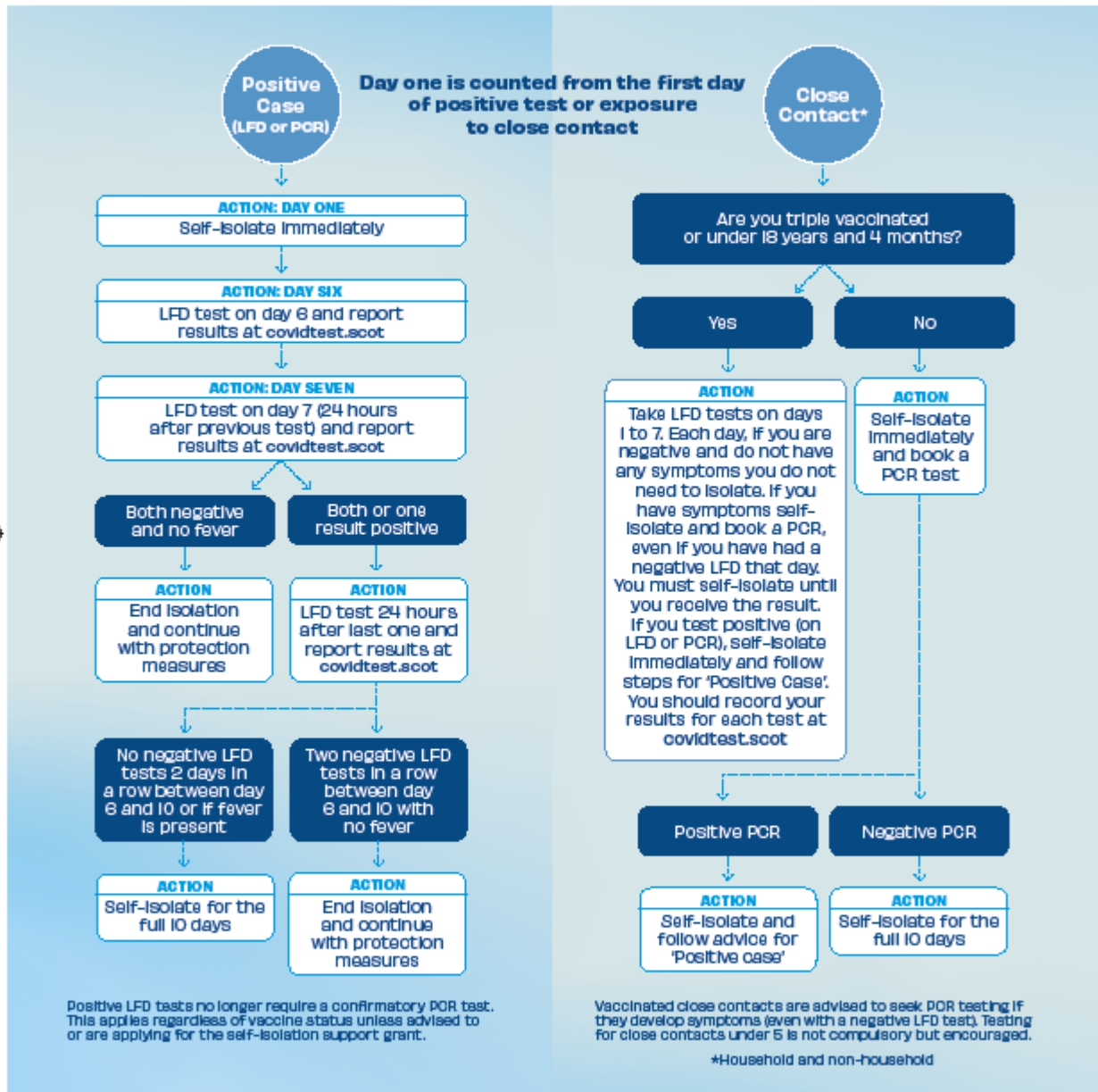


Mrs D McWilliam  
Head Teacher



**Living safely  
this winter**

## Changes to Self-Isolation and Testing



### For more details visit [NHSinform.scot/isolation](https://NHSinform.scot/isolation)

Being fully vaccinated reduces your risk of serious ill-health or hospitalisation from COVID-19 and time in self-isolation if you are a close contact. If you are not fully vaccinated visit [NHSinform.scot](https://NHSinform.scot) or call 0800 030 8013 for details on how to get your first or next dose.

