



# BRIDGE OF DON ACADEMY

*Be Caring Be Honest Be Respectful Be Your Best*

Braehead Way • Bridge of Don • Aberdeen • AB22 8RR

Tel 01224 707583

Web: [www.bridgeofdon.aberdeen.sch.uk](http://www.bridgeofdon.aberdeen.sch.uk)

E-mail: [bridgeofdon@aberdeencity.gov.uk](mailto:bridgeofdon@aberdeencity.gov.uk)

**Head Teacher: Daphne McWilliam**



2 June 2022

Dear Parent/Carer

## Head Teacher's Update – 2 June 2022

I write to update you on the following:

- Calendar Dates
- Change of Timetable
- School Entrances
- Uniform S1 – S4
- Senior School Uniform
- PE Kit required on Monday 6 June
- Support for Families
- Take a Break
- Pathway Planning – Developing the Young Workforce (DYW) Opportunities
- Contact with School

### Calendar Dates

Queen's Platinum Jubilee Day

Friday 3 June 2022

New Timetable begins

Monday 6 June 2022

Last Day of Term:

Friday 1 July 2022

### Change of Timetable

Young people will be given their new timetables on Monday 6 June 2022. These will be issued through registration classes and we will extend registration to create time for this. Period 1 will therefore begin at 09.00 on Monday.

Details of registration classes/teachers and rooms for session 2022 – 23 will be posted in Google Classrooms.

(new) S2 use their S1 Google classroom code **iggjtue**

(new) S3 use their S2 Google Classroom code **gulakzl**

(new) S4 use their S3 Google Classroom code **n3guhjt**

(new) S5 use their S4 Google Classroom code **rx7gi6g**

(new) S6 use their S5 Google Classroom code **67jutwd**

They will also find the details of college courses, city campus courses and other timetable information required for Monday.

Young people will be given new Google Classrooms for the new session later.

### **School Start Time**

The pupil school week is 27 hours and 30 minutes. The school day for the next four weeks will be as follows to ensure pupils are in classes for the appropriate number of hours and minutes each week.

For clarity late arrival in the morning will be arrival after the bell at 08.39.

<b>Monday and Tuesday</b>		<b>Wednesday, Thursday, and Friday</b>	
08.34	warning bell	08.34	warning bell
08.39	period 1 begins	08.39	period 1 begins
09.45	period2	09.45	period2
10.45	break	10.45	break
11.05	period 3	11.05	period 3
12.05	period 4	12.05	period 4
13.05	lunch	13.05	lunch
13.50	warning bell	13.50	warning bell
13.55	period 5 begins	13.55	period 5 begins
14.55	period 6 begins	14.55	end of school day
15.55	end of school day		

### **School Entrances**

We have reviewed the use of school entrances because we no longer have to separate year groups and the following will be in place from Monday 6 June:

(new) S2 please use current S5 door beside windows of Home Economics

(new) S3 please use current S3 door beside windows of G10/G11

(new) S4 please use current S4 door beside windows of the Assembly Room

(new) S5 please use current S5 door beside windows of Home Economics

(new) S6 please use current S3 door beside windows of G10/G11

These are all doors on automatic timers. However senior staff will still meet and greet young people each day.

From August (new) S1 will use the doors currently used by first years – entry to the building at the swimming pool entrance and entry to the teaching block via canteen doors.

The reason for maintaining different entry points to the school building is to allow a smooth and welcoming start to learning first thing in the morning, after break and after lunch for young people. It will also support safe and organised movement through the school at these potentially busy times.

During the first six minutes of period 1 teachers will be able to do a quick uniform check to ensure young people are suitably dressed for the day and deal with other small administrative tasks where possible.

Please see map at the end of this letter for location of these entrances.

## **Uniform S1 – S4**

The details of school uniform are on the school website [here](#). As I have previously intimated the uniform is planned to keep costs as low as possible for families. All items except the school tie can be purchased from shops and outlets of a family's choice.

We understand that washing machines break down and that young people have growth spurts and need new trousers or shoes which puts financial pressure on families. If your child(ren) cannot attend in uniform for a valid reason, please just let the school know. We also understand that fuel costs and unforeseen expenses can put extra pressure on families who may just need help in the short term. Please let us help where we can – contact your child's Head of House directly or just email the school and we will do what we can to support the purchase of appropriate uniform items.

## **Senior School Uniform**

Pupils who have been accepted for return to school in S5 and S6 are expected to wear Senior School uniform, which comprises school blazer, white/black shirt, red senior tie, black trousers/skirt and black shoes.

Our blazers and tie are available from Abstitch in the centre of town. Their address is: 35 Ann St, Aberdeen, AB25 3LH, telephone number 01224 639152. Their opening hours are Monday to Friday from 9am until 4pm.

Blazers are measured to fit and are easily kept. They are light and practical and can be washed at home.

We have been informed that a large number of our seniors have been into Abstitch over the study leave but more stock is due in on Monday.

Prices as of 27 May are:

School tie: £7.50

Blazer: £33 to £39, depending on size



## **PE Kit required on Monday 6 June**

Young people in the following classes will need PE kit on Monday 6 June. Thereafter they will know from their timetable when to bring their PE kit to school

- Higher Leadership
- Higher Physical Education
- National 5 Physical Education
- S3 Physical Education Elective: if pupils in (new) S3 have chosen PE

The following (new) S3 classes

- 3 Braemar
- 3 Crathes 1
- 3 Crathes 2
- 3 Fyvie

The following (new) S2 Classes

- 2 Braemar
- 2 Braemar 2
- 2 Crathes
- 2 Drum
- 2 Fyvie

## **Support for Families**

We are all affected by the rise in the cost of living including fuel costs. I have posted on the school website a Finance Postcard detailing how families can access free help and support to ensure they are getting all the benefits and financial support they

are entitled to. Use this [link](#) to access this or contact your child(ren)'s Head of House for support in accessing this.

## Take a Break

The Scottish Government funded [Take a Break Scotland](#) administered by Family Fund, opened for applications on Tuesday 3<sup>rd</sup> May 2022 and will remain open until 5:00pm on Monday 20<sup>th</sup> June 2022. This fund supports families of children with disabilities.

## Pathway Planning – Developing the Young Workforce (DYW) Opportunities

DYW opportunities are regularly available on Google Classroom and the school website for young people to see.

Because this letter is going out one day early we have not yet received our weekly DYW update. However, this will resume next Friday.

## Contact with School

When e-mailing please provide your child's name and registration class and a note of the nature of the concern so it can be forwarded appropriately.

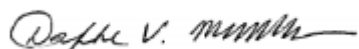
### Pastoral Care

Braemar House:	Miss Howard
Crathes House:	Mrs Napier
Drum House:	Mrs Walburn
Fyvie House:	Mrs Marshall

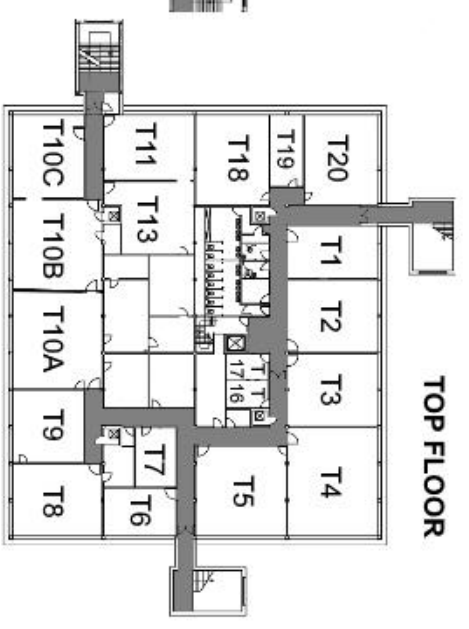
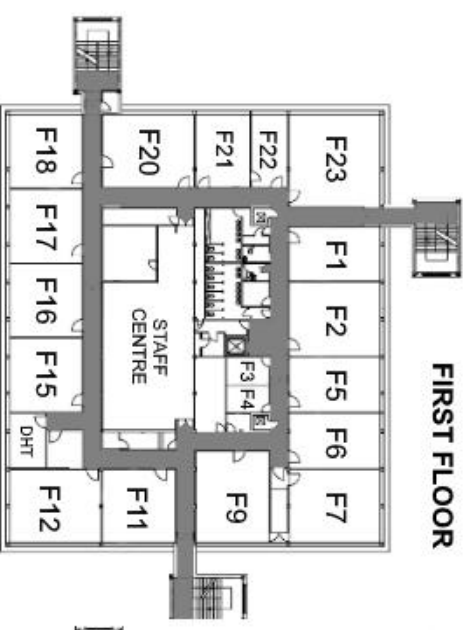
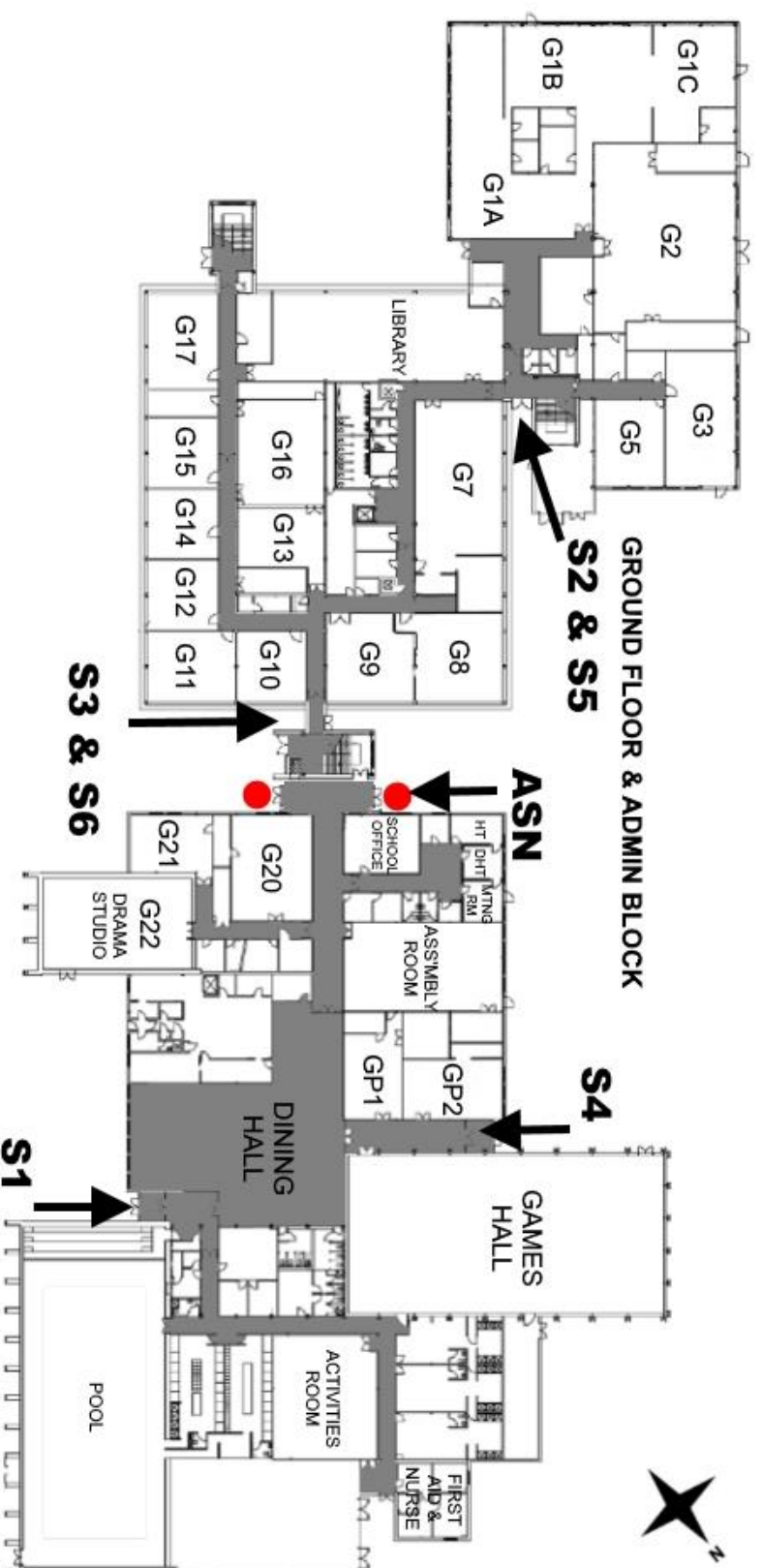
### Year Heads

S1 and S2:	Mr Haggarty
S3 and S4:	Mrs Cruickshank
S5 and S6:	Mr Jamieson

Yours sincerely



Mrs D McWilliam  
Head Teacher



**BRIDGE OF DON  
ACADEMY**

● Main Entrance

